



SSH Key Generation



SSH Key Generation

TechHelpdesk Instalations	DATE:	25/11/2016	REVIEW:	1.1	PAGE:	Page 2 of 6
Clasification: Internal						

Review/Approval		
Made by:	TechHelpdesk Instalations	
Reviewed by:		
Approved by:		

Version	Date	Changes in the history
		Action Description
1.0	25/11/2016	Creation of the document
1.1	13/12/2017	Added Conversion of keys in Putty format for use in Linux SFTP

	Distribution List	
Date	Name	Sign

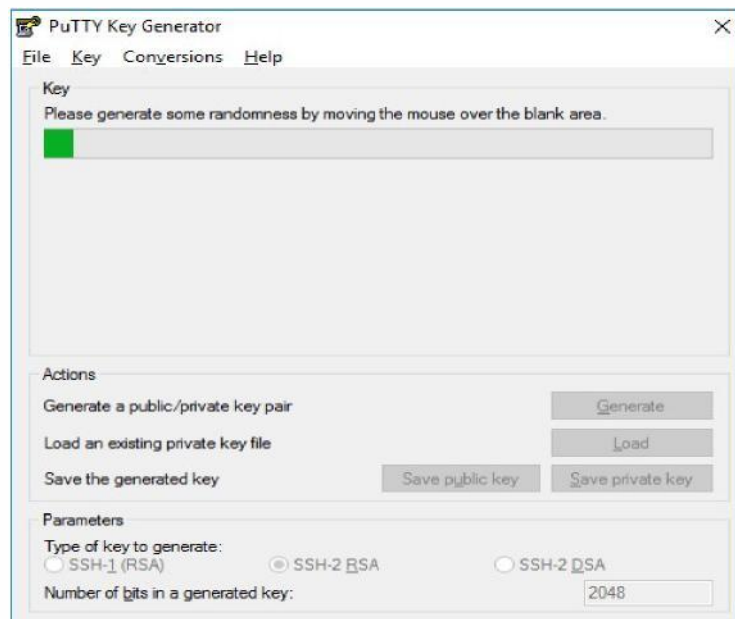
TechHelpdesk Instalations	DATE:	25/11/2016	REVIEW:	1.1	PAGE:	Page 3 of 6
Classification: Internal						

Introduction

In this document is explained how generate SFTP SSH connection keys with PuTTY Key Generator Software.

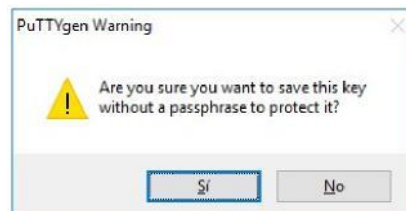
SSH Key Generation with PuTTY Key Generator.

Firstly, we will open program puttygen.exe and select parameters **SSH2 RSA (2048)** or the corresponding ones according to Form and we will click **Generate button.**

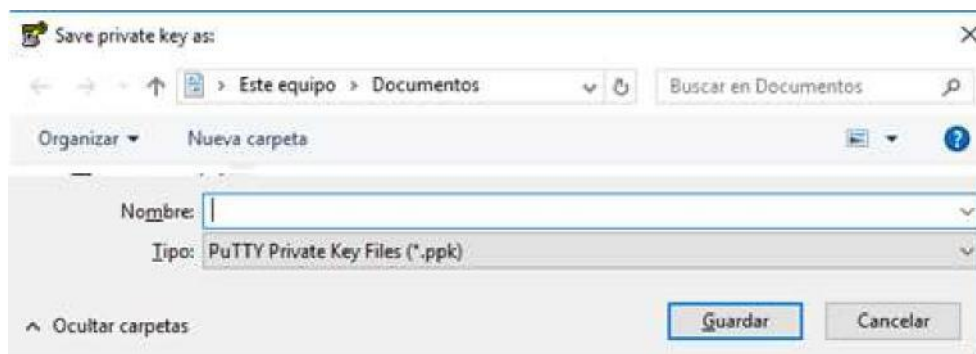


TechHelpdesk Instalations	DATE:	25/11/2016	REVIEW:	1.1	PAGE:	Page 4 of 6
Classification: Internal						

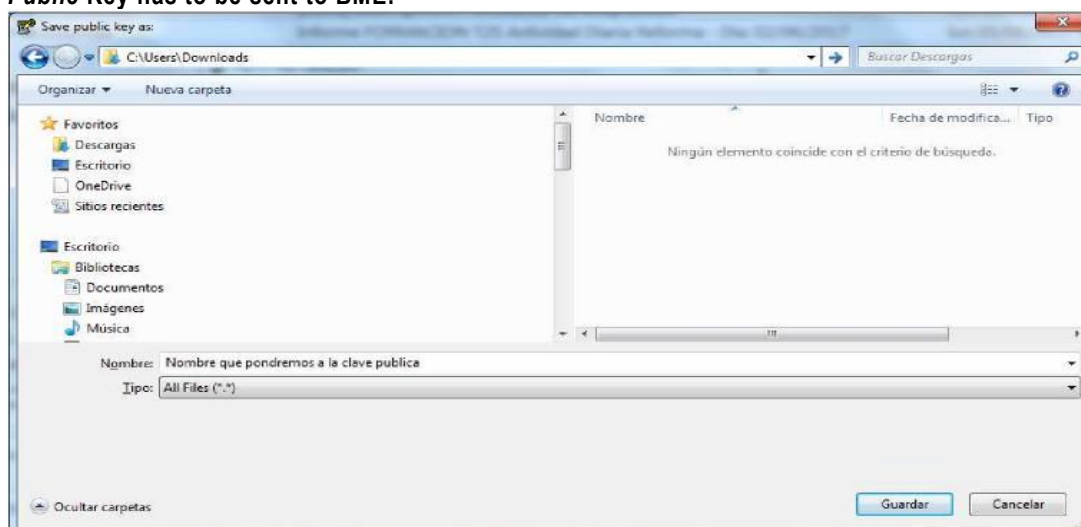
The program will generate a public key and another private (ppk) that we will have to save.



Private Key will be saved in the computer.:



Public Key has to be sent to BME:

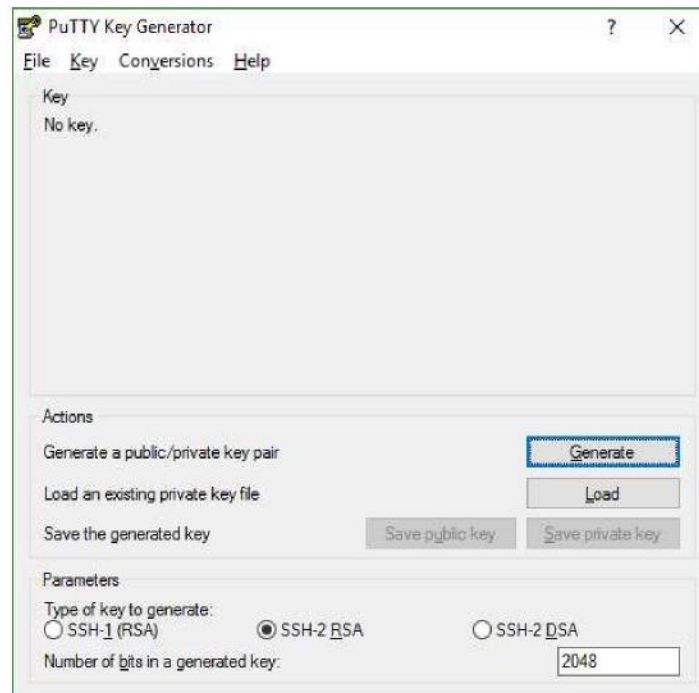


TechHelpdesk Instalations	DATE:	25/11/2016	REVIEW:	1.1	PAGE:	Page 5 of 6
Classification: Internal						

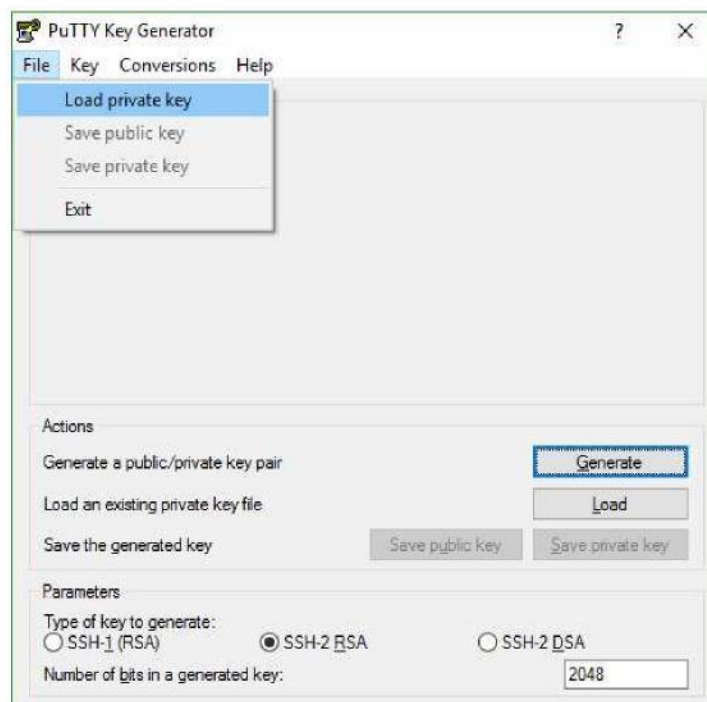
Conversion of keys in Putty format for use in Linux SFTP

In case of the pair of keys have been generated with PuttyGen it´s necessary export public key for use it in Linux SFTP following the next steps:

Execute Puttygen.exe:



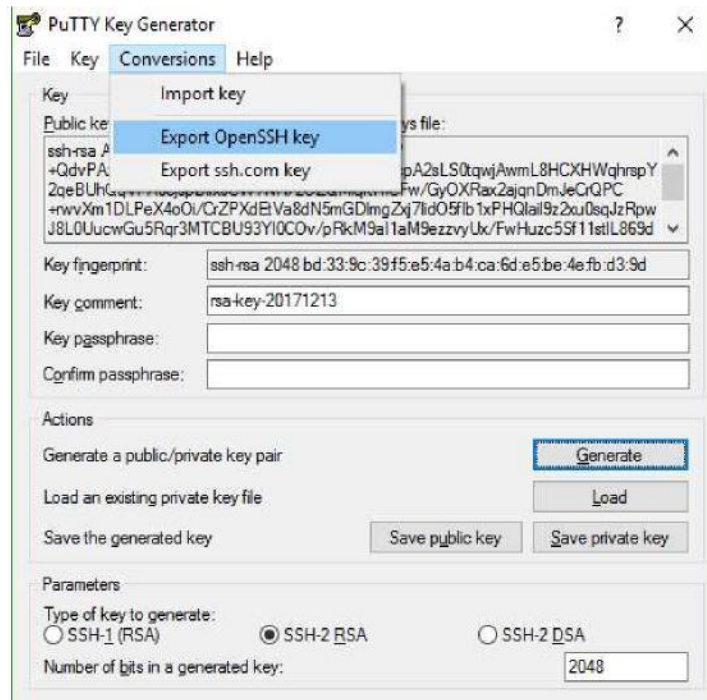
In Top Menu select File -> Load private key



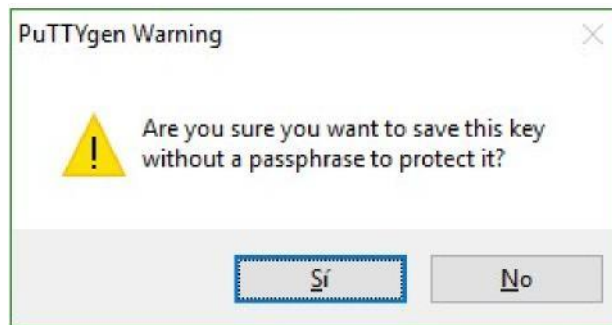
TechHelpdesk Instalations	DATE:	25/11/2016	REVIEW:	1.1	PAGE:	Page 6 of 6
Classification: Internal						

Select private key file (usually with extension .ppk)

Once private key is loaded, select in menú Conversions -> Export OpenSSH key.



Answer "Yes" to save public key without password.



Specify output file name (don't worry about file extensión) and save.

That exported file is private key that has to be provided in SFTP Linux connection.

If you want to check, exported file has to begin and end with labels (BEGIN RSA PRIVATE KEY) and (END RSA PRIVATE KEY), and private key usually begins with letters (MIIE) as follows:

```
-----BEGIN RSA PRIVATE KEY-----
MIIEoQIBAAKCAQEArcP+QdvPAzSqt0wf
t.rwiAwmL8HCXHWahrspY?aeRIhOaVPA0
qA01Di0chui0GXeTE5i5f8q1s31+i4
-----END RSA PRIVATE KEY-----
```